

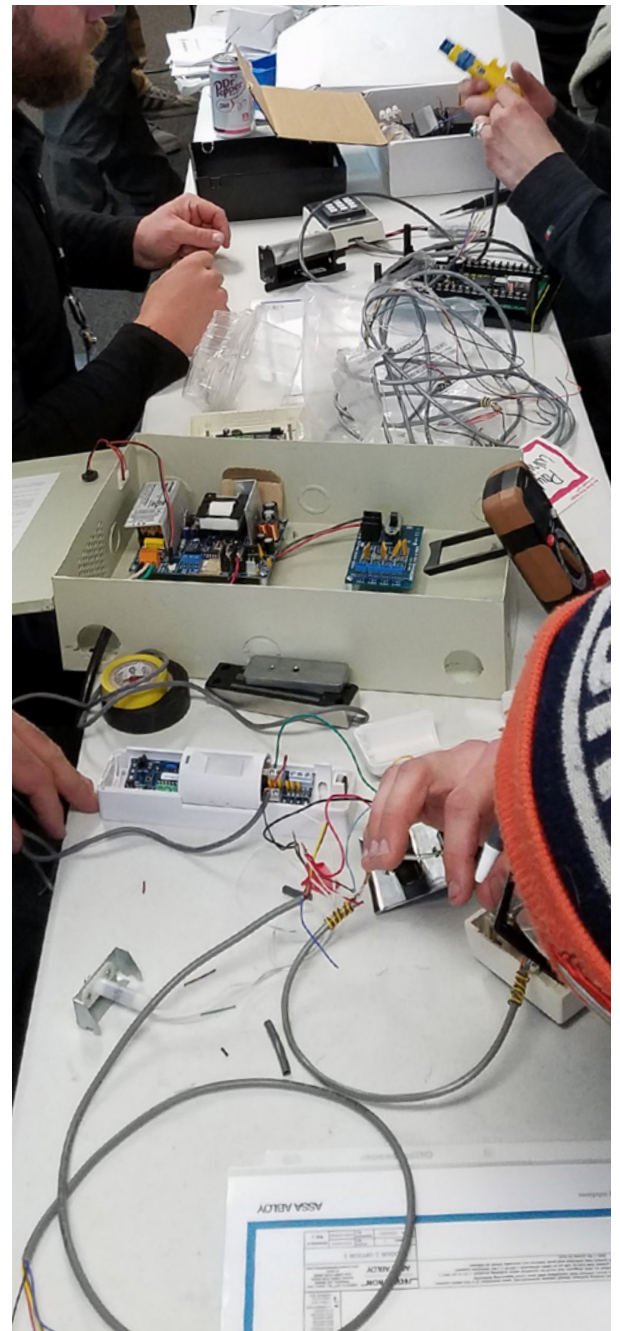
Factory Training

ELECTRONIC SECURITY HARDWARE HES | SECURITRON | ADAMS RITE

The global leader in door opening solutions

ASSA ABLOY is proud to offer the following educational courses covering Adams Rite®, HES® and Securitron® product lines. These courses will educate the attendee on various levels of product and technical knowledge, selling techniques, site survey, and system design and product installation.

To learn more about training classes offered, please contact training.request@assaabloy.com



Basic Low Voltage Electricity for Installers

Course length: 4 hours

Class size limit: 20 students

Credits offered: ALOA #AATP-AA007, ESA #13-3838.4 credits, NJCEU

Attendees: Locksmiths, Installers, Access Control Technicians

Content balance:
30% instructional | 70% hands-on learning

Course Description

This entry level course is designed to educate the participants in the basic electronic knowledge needed to wire an electronic locking system. The class includes a balance of instructional and hands-on exercises. The following subjects are covered:

- Key figures in electricity
- Voltage, current and resistance
- AC & DC electricity
- Switches and relays
- Normally open – normally closed circuits
- Fail Safe/Fail Secure lock wiring
- Hands-on basic system wiring and operation
- Series versus parallel wiring
- Use of multi-meters and how to test
- Multi-meter circuit
- Testing for volts & amps
- Electronic components

Note: This class requires a classroom style configuration for table top hands-on work space for all participants. Access to multiple electronic outlets is required. Extension cords to be provided by trainer.

Advanced Electronic System Wiring and Basic Troubleshooting

Course length: 4 hours

Class size limit: 20 students

Credits offered: ALOA #AATP-AA007
ESA #13-3837 NJCEU

Attendees: Locksmiths, Installers, Access Control Technicians

Content balance:
20% instructional | 40% hands-on learning

Prerequisites: Basic Low Voltage Electricity for Installers

Course Description:

This course is designed for participants with previous basic electronic knowledge and use of a multimeter. Covered in this course are advanced access control and system wiring techniques, installation and product troubleshooting. The class includes instructional and hands-on exercises covering the following subjects:

- Fire alarm interface
- Fail safe lock system wiring
- Fail secure lock system wiring
- Basic system trouble shooting - using multi-meter

- Wiring troubleshooting - what you should test
- Basic access control systems troubleshooting

Note: This class requires a classroom style configuration for table top hands-on work space for all participants. Access to multiple electronic outlets is required. Extension cords to be provided by trainer.

Level 3 – Electronic Circuits, Wiring Diagrams and System Design

Course length: 4 hours

Class size limit: 20 students

Credits offered: To be Submitted – ALOA, ESA, NJCEU

Attendees: Locksmiths, Installers, Access Control Technicians

Content balance:
20% instructional | 80% hands-on learning

Prerequisites Recommended: Basic Low Voltage Electricity, Advanced Wiring and Troubleshooting or a minimum of 3 years of low voltage experience in the field.

Course Description:

This course is designed for participants who have previous basic and advanced wiring electronic knowledge and use of a multi-meter. Topics to be covered in this course include basic understanding of the power supply and setting up the electric circuit using a load calculator, creating an Operations Narrative in conjunction with a wiring diagram, setting up advanced wired systems, and product troubleshooting. The class also covers:

- Creating wiring diagram
- Review of voltage, amperage and resistance with a multi-meter
- Series vs. parallel wiring
- DK-26 and AQD6 Power Supply
- Magnetic locks and electric strike setup and wiring
- Team layout and wire an operational man-trap

Note: This class requires a classroom style configuration for table top hands-on work space for all participants. Access to multiple electronic outlets is required. Extension cords to be provided by trainer.

Site Survey

Course length: 2 hours (time may vary)

Class size limit: Unlimited

Credits offered: ALOA #AATP-AA008, NJCEU, ESA #14-3902 .2 credits

Attendees: Locksmiths, Installers, Access Control Technicians, Sales Technicians

Content balance: 100% instructional – Site Survey and Maglocks Accessory Tools Provided

Course Description:

This course covers the proper method of conducting a site survey to determine the best ASSA ABLOY products for the opening while ensuring to meet the customer's needs including power supply, locks, entry device and exit device selection. Instructional and hands-on exercises cover the following subjects:

- Codes & AHJ
- Fire-rated doors
- Purpose of electric locking system
- Walk through techniques
- Types of electric locking systems
- Electronic locking system component selection
- Brackets and accessories
- System layout and hardware schedule forms
- Common errors, tips and techniques

Access Control Hardware Selection

Course length: 2 hours

Class size limit: Unlimited

Credits offered: ESA 12-3433 .2 credits

Attendees: Integrators, Engineers and Architects, Locksmiths, Installers, Access Control Technicians, Counter and Sales Technicians

Content balance: 100% instructional

Course Description:

This course covers the next generation of door hardware products from Adams Rite, HES and Securitron. See how their access control hardware products work together. Review how to secure all types of openings and provide customers with a total locking solution.

Aperio® Product and Applications

Course length: 1 – 2 hours

Class size limit: 30 students

Credits offered: Pending

Attendees: Locksmiths, Installers, Access Control technicians

Content balance: 100% instructional

Prerequisites: Basic Low Voltage Electricity for Installers

Course Description:

This course covers the basics of what Aperio is as a technology the applications and solutions best suited for Aperio, and the ASSA ABLOY products that integrate Aperio technology.

- What is Aperio?
- How does Aperio technology work?
- Where can I use Aperio technology?
- What ASSA ABLOY products are integrated with Aperio?
- Hands on application with Aperio products

Access Control for Small Openings – Cabinets & Racks

Course length: 4 hours

Class size limit: 20 students

Credits offered: Pending

Attendees: Locksmiths, Installers, Access Control technicians

Content balance:

50% instructional | 50% hands-on learning

Prerequisites: Basic Low Voltage Electricity for Installers

Course Description:

This course covers how to add access openings such as cabinets, drawers, desks and lockers.

- Securitron DKC and applications
- Setup of Securitron DKC systems
- Securitron K100 Cabinet Lock
- Securitron KS100 Server Cabinet Lock
- Troubleshooting exercises

Note: This class requires a classroom style configuration for table top hands-on work space for all participants. Access to multiple electronic outlets is required. Extension cords to be provided by trainer.

Electric Strike Application & Installation

Course length: 3 – 4 hours

Class size limit: 15 students

Credits offered: ALOA #AATP-AA011, NJCEU, ESA #13-3839.2 credits

Attendees: Locksmiths, Installers, Access Control Technicians

Content balance:

70% instructional | 30% hands-on learning

Course Description:

Students are shown the easiest techniques for cutting and installing an electric strike into a hollow metal door frame. Cutting tool selection and use of the HES metal template kit is demonstrated. Students will be allowed to individually measure and cut in a strike. Instructional and hands-on exercises cover the following subjects:

- Codes and standards
- Fire-rated verses non-fire rated openings
- Electric strike application and selection
- Frame and door types
- Fail safe to fail secure conversion of HES strikes
- 12 to 24 volt electric strike conversion
- Solenoid testing and troubleshooting
- Installation techniques
- Safety
- Hands on installation of electric strikes

Note: This class requires a work area that is subject to loud noise from the cutting tools, including smoke, burning metal fumes and sparks. Adequate ventilation is necessary and damage to work tables is possible. Work tables provided for training must have squared corners. Access to electronic outlets is required.

Electric Strike and Product Applications

Course length: 2 hours

Class size limit: Unlimited

Credits offered: ALOA #AATP-AA010, NJCEU, ESA 14-4022 .2 credits

Attendees: Integrators, Engineers and Architects, Locksmiths, Installers, Access Control Technicians,

Content balance: 100% instructional

Course Description:

This course covers the application of HES electrified locking products. Participants will cover application and features of the entire line of HES electric strikes, including Folger Adam and cabinet locking solutions.

Magnetic Lock System Installation

Course length: 4 hours

Class size limit: 16 students (4 students per station)

Credits offered: ALOA #AATP-AA008 NJCEU ESA #11-3221 .4 credits

Attendees: Locksmiths, Installers, Access Control Technicians, Sales Technicians

Content balance:

40% instructional | 60% hands-on learning

Prerequisites: Basic Low Voltage Electricity for Installers

Course Description:

This course offers a hands-on installation of several of the most common magnetic locking systems, including surface and concealed magnetic locks, touch sense devices, digital keypads, motion sensors and emergency exit buttons. Instructional and hands-on exercises cover the following subjects:

- Purpose of electronic locking system
- Basic code requirements
- Maglock – types and applications
- Walk through techniques – frame identification
- Magnetic locking system component selection
- Brackets and accessories
- System layout and hardware schedule forms
- Common errors, tips and techniques
- Hands-On-Install, programming & testing

Note: This class requires a classroom style configuration for table top hands-on work space for all participants. Access to multiple electronic outlets is required. Extension cords to be provided by trainer.

Adams Rite Storefront Product Applications

Course length: 2 hours

Class size limit: 30 students

Credits offered: ESA #14-3901 NJCEU

Attendees: Integrators, Engineers and Architects, Locksmiths, Installers, Access Control technicians, Counter and Sales Technicians

Content balance: 100% instructional

Course Description:

This course covers the application of Adams Rite mechanical and electrified locking products. Participants will cover the variety of locking solutions for aluminum doors, including mechanical deadbolts, deadlatches and panic exit devices along with electrified hardware products.

Note: This class requires a classroom style configuration for table top hands-on work space for all participants.

Adams Rite Storefront Products Mechanical to Electronic Upgrade

Course length: 4 hours

Class size limit: 16 students (4 students per station)

Credits offered: ALOA #AATP-AA005m NJCEU ESA #14-4024 .2 credits

Attendees: Locksmiths, Installers, Glazers, Access Control Technicians, Sales Technicians

Content balance:

40% instructional | 60% hands-on learning

Course Description:

This course covers the selection and upgrade of Adams Rite mechanical products to the Adams Rite electrified locking products. Participants will cover the variety of locking solutions for aluminum doors, along with hands on conversion of mechanical to electrified locking and exit hardware. Instructional and hands-on exercises cover the following subjects:

- The Adams Rite MS door prep
- What fits into the Adams Rite MS prep
- Cams, deadbolts and deadlatches
- HES 8000 Series Exit Devices
- Adams Rite electric strikes
- Adams Rite 4300EL Steel Hawk Electrified Deadlatch
- Adams Rite 1850 deadbolt installation
- Adams Rite 4900 Deadlatch & 4591 Paddle installation
- Adams Rite 4300 eLatch & 4591 installation
- Hands-on installation Adams Rite 4300, 3080, 2190, eForce

Note: This class requires a classroom style configuration for table top hands-on work space for all participants. Access to multiple electronic outlets is required. Extension cords to be provided by trainer.

Securitron State of the Art Smart Product Applications

Course length: 4 hours

Class size limit: 30 students

Credits offered: ALOA #AATP-AA012, NJCEU, ESA# 14-4023 .4 credits

Attendees: Integrators, Engineers and Architects, Locksmiths, Installers, Access Control Technicians, Counter and Sales Technicians

Content balance: 100% instructional

Course Description:

This course covers the application of Securitron electrified locking products and accessories including magnetic locks, touch sense devices, digital keypads, power supplies, delayed egress systems and more.

Maglocks: The Good, The Bad and The Ugly

Course Length: 2 hours

Class size limit: Unlimited

Credits offered: ESA 14-4162, NJCEU

Attendees: Locksmith, Integrators, Distributors, AHJ's Personnel

Content Balance: 100% instructional

Course Description:

This course addresses the history of and misconceptions about Maglocks. Additionally, this course clarifies confusion about codes and compliance. The following topics will be covered:

- Who is ASSA ABLOY?
- Changes in industry technology
- How did it happen?
- The Ugly
- The Codes and Requirements
- Combating the Ugly
- The Good (Maglocks)
- Magnetic lock terms, application and products
- Releasing the door
- Tools and support
- Summary and questions

It's What's on the Outside that Counts – Outdoor Applications

Course length: 2 hours

Class Size: Unlimited

Credits Offered: ESA 14-4109, NJCEU

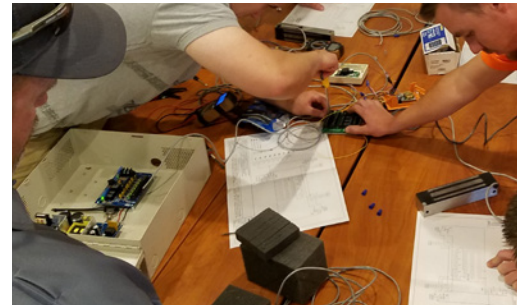
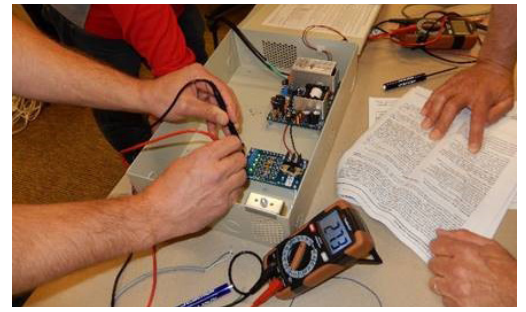
Attendees: Locksmiths, Integrators, Distributors

Content balance: 100% instructional

Course Description:

This course covers a variety of products and applications including gate locks, solar power, wireless outdoor readers, strikes, keypads and more. Learn what locking products will withstand the weather, ways to secure a perimeter and how to get power to remote locations. The following subjects are covered:

- Who is ASSA ABLOY?
- Adding access control in outdoor environments presents challenges
- Products to meet your need
- Applications
- Boxed Solar Power Supply
- Solar considerations and applications
- What's in the box?
- Environmental Consideration
- SecuriCare Warranty
- Electric Strikes
- Electromagnetic Locks



ASSA ABLOY is the global leader in door opening solutions, dedicated to satisfying end-user needs for security, safety and convenience

ASSA ABLOY

ELECTRONIC SECURITY HARDWARE HES | SECURITRON

800.626.7590 | F. 866.582.4641 | assaabloyesh.com

ADAMS RITE

800.872.3267 | F. 800.232.7329 | adamsrite.com

Copyright © 2018, Hanchett Entry Systems, Inc., an ASSA ABLOY Group company. All rights reserved. Reproduction in whole or in part without the express written permission of Hanchett Entry Systems, Inc. is prohibited. EMS-005-1018