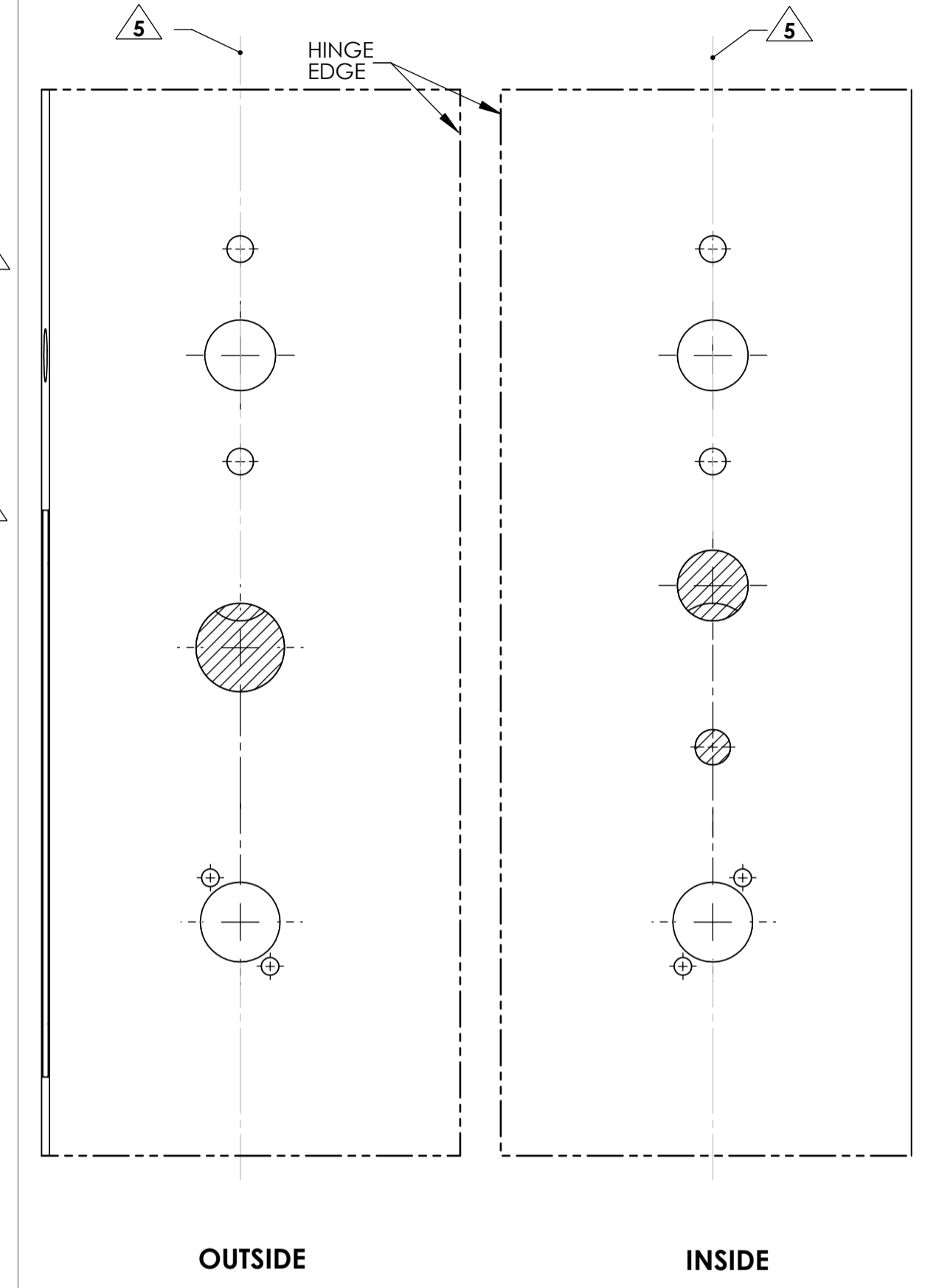
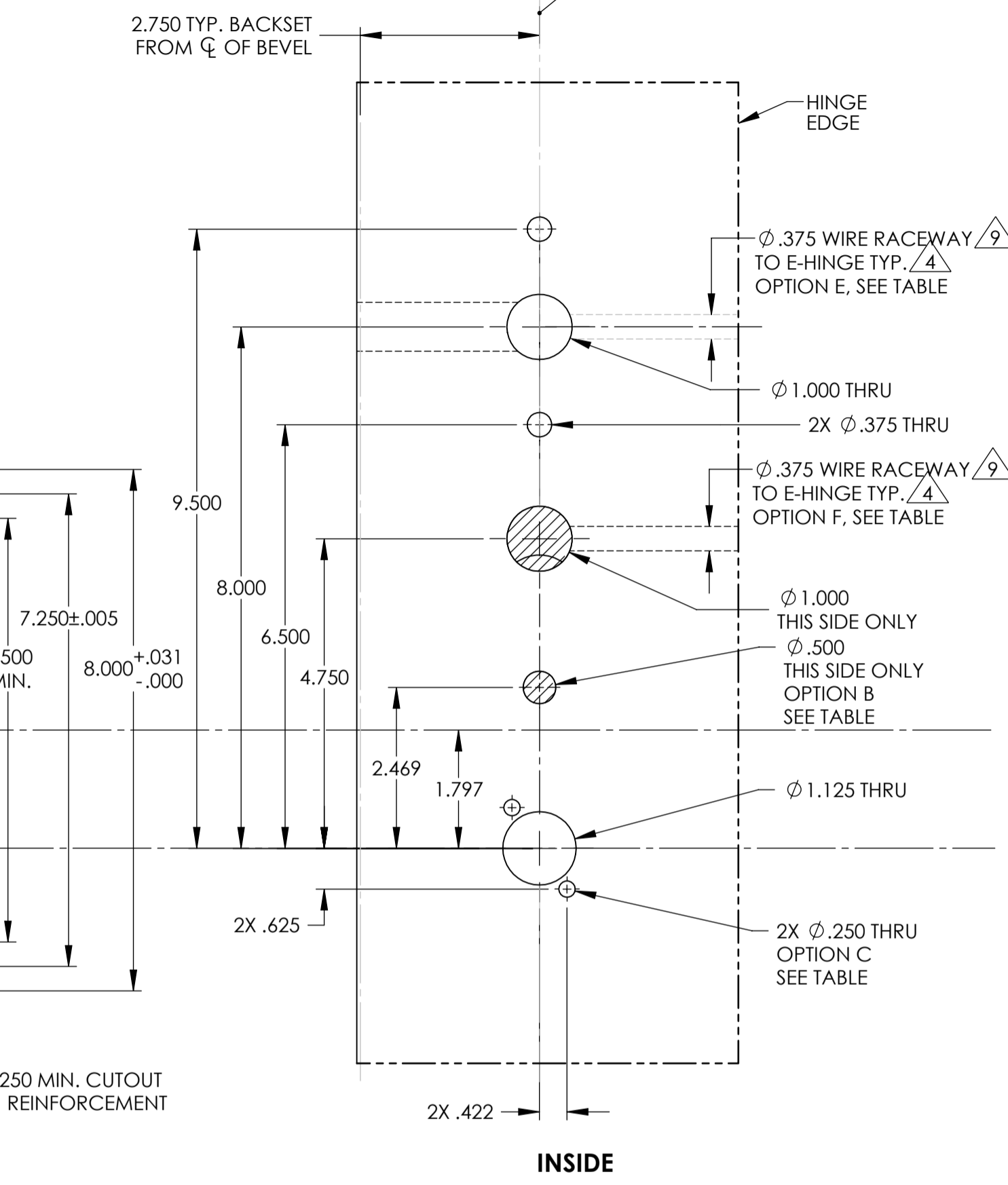
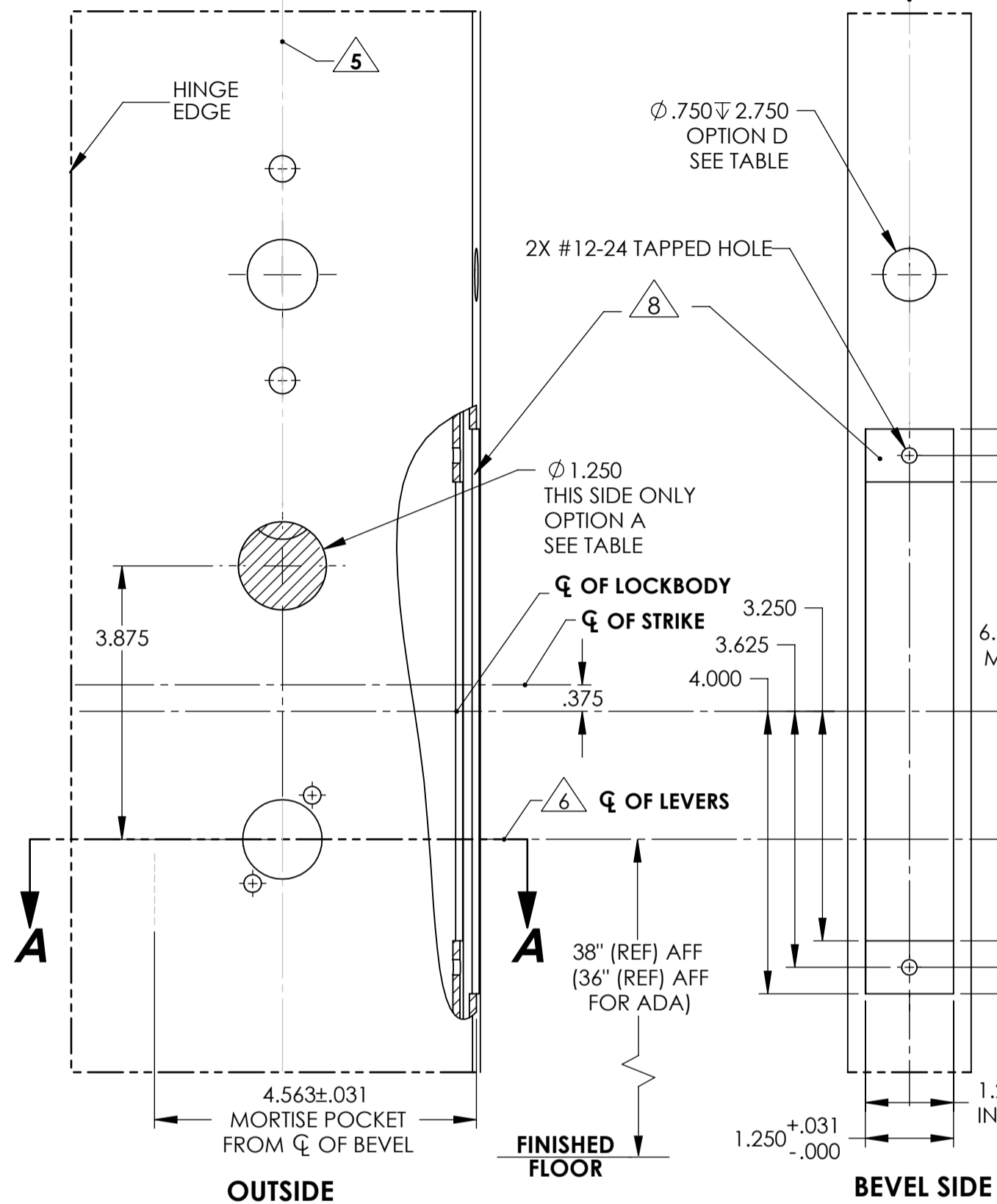
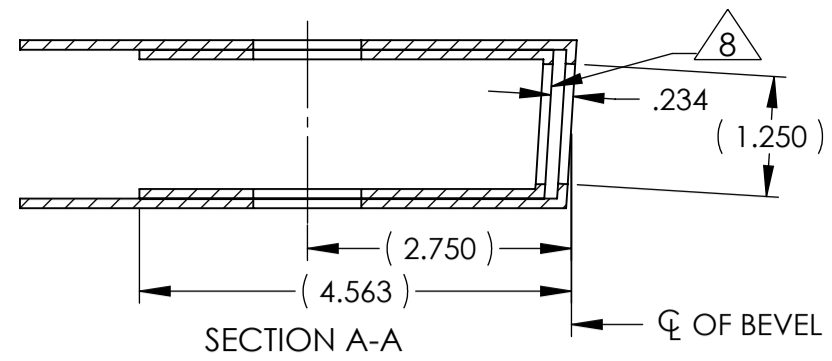


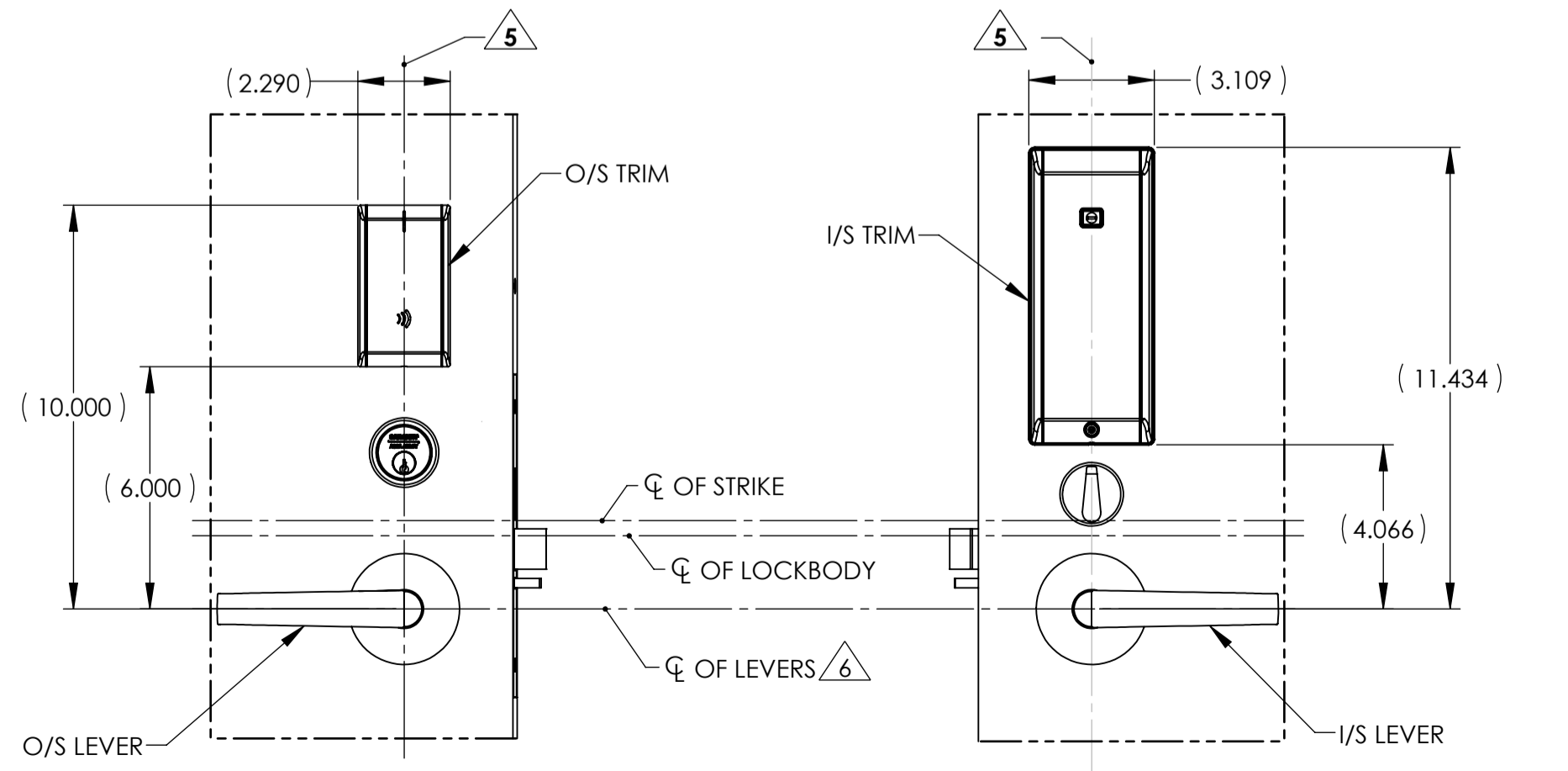
METAL DOOR



L.H. DOOR

R.H. DOOR

- NOTES:
- DRAWING IS NOT TO SCALE.
 - PREPARATION DETAILS ARE IN SUPPLEMENT TO ANSI/BHMA A156.115 AND/OR A115W.
 - REFERENCE STRIKE TEMPLATE FOR DETAILS TO PREPARE FRAME.
 - FOR ELECTROLYNX APPLICATIONS, REFER TO MCKINNEY TRANSFER DEVICE CATALOG.
 - VERTICAL CENTERLINE IS REFERENCED FROM THE CENTERLINE OF THE BEVEL. (INDUSTRY STANDARD BEVEL IS 1/8 INCH IN 2 INCHES.)
 - CONSULT THE AUTHORITY HAVING JURISDICTION (AHJ) TO VERIFY THE RECOMMENDED MOUNTING HEIGHT ABOVE THE FINISHED FLOOR (AFF).
 - STANDARD TOLERANCE OF ± .015 APPLIES TO ALL DOOR PREPARATION REQUIREMENTS, UNLESS OTHERWISE SPECIFIED.
 - DOOR REINFORCEMENT IS RECOMMENDED TO IMPROVE (SURFACE MOUNTED) FASTENER HOLDING POWER AND CRUSH RESISTANCE (WHEN THRU-BOLTING IS EMPLOYED). CONSTRUCTION TECHNIQUES SHOULD REFLECT INDUSTRY BEST PRACTICES (I.E. WDMA, SDI) AND AUTHORIZED METHODS WHERE LABEL SERVICE (I.E. UL, W-H) IS IN EFFECT.
 - WIRE RACEWAY AREAS SHOULD BE FREE OF OBSTRUCTIONS & SHARP EDGES TO PROTECT WIRES FROM CUTS & ABRASIONS.
 - CAREFULLY NOTE WHICH FEATURES ARE OPTIONAL, WHETHER THE FEATURE APPLIES TO BOTH SIDES OF THE DOOR AND/OR IF A DEPTH APPLIES.
 - MAXIMUM PRODUCT DIMENSIONS ARE SHOWN FOR THE PURPOSE OF VERIFYING FITMENT WITH DOOR FRAME STOPS, DOOR STILE SIZE & LIGHT/LOUVER KITS.
 - IF OPTIONAL LEVERS OR ROSES ARE USED REFERENCE THE RELATED PRODUCT DIMENSIONS TO VERIFY THE FITMENT REQUIREMENTS.



OUTSIDE L.H. TRIM SHOWN 11 12

INSIDE L.H. TRIM SHOWN 11 12

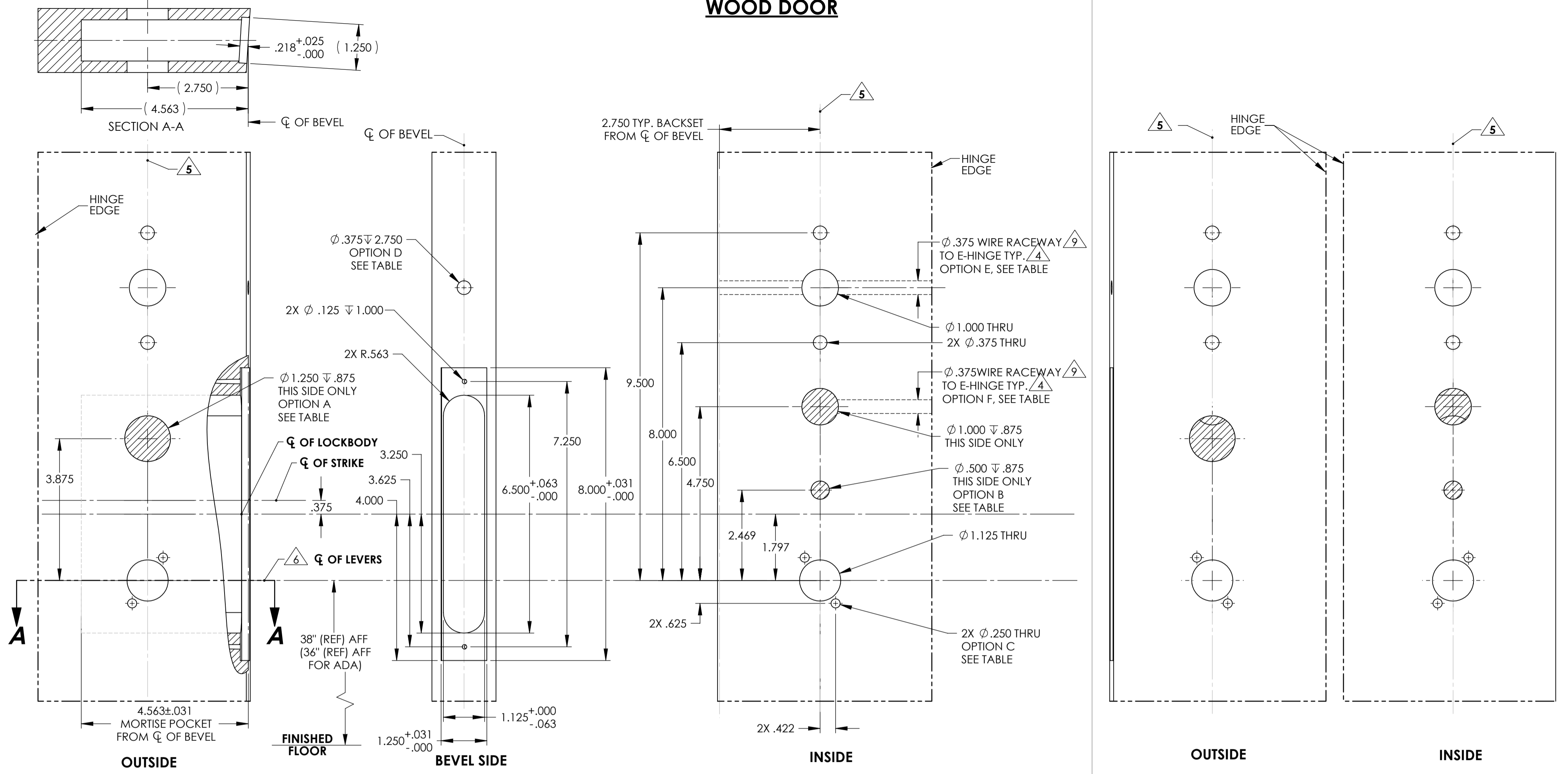
| AUTHORIZED PREFIXES | | USED FOR FUNCTIONS | | | |
|---------------------|---------------------|----------------------|------|-------|------|
| IN | | 7976 | 7977 | 7978 | 7979 |
| A | CYLINDER | X | - | X | - |
| B | THUMB TURN | X | X | - | - |
| | | USED FOR LOCK SERIES | | | |
| | | 7900 | 8200 | R8200 | |
| C | TRIM POST | X | X | - | |
| D | EXTERNAL DPS | X | - | - | |
| | | USED FOR PREFIXES | | | |
| | | 91- ALL OTHERS | | | |
| E | HARD WIRE | X | - | - | |
| | | 220- ALL OTHERS | | | |
| F | POWER OVER ETHERNET | X | - | - | |

| BACKSET DEFINITION | | DOOR HANDING | | | |
|----------------------|--|--------------|---------|----------|--|
| BACKSET | | L.H. | INSIDE | R.H. | |
| TOP OF DOOR | | OUTSIDE | | | |
| VERTICAL CL OF BEVEL | | INSIDE | | | |
| | | L.H.R.B. | OUTSIDE | R.H.R.B. | |

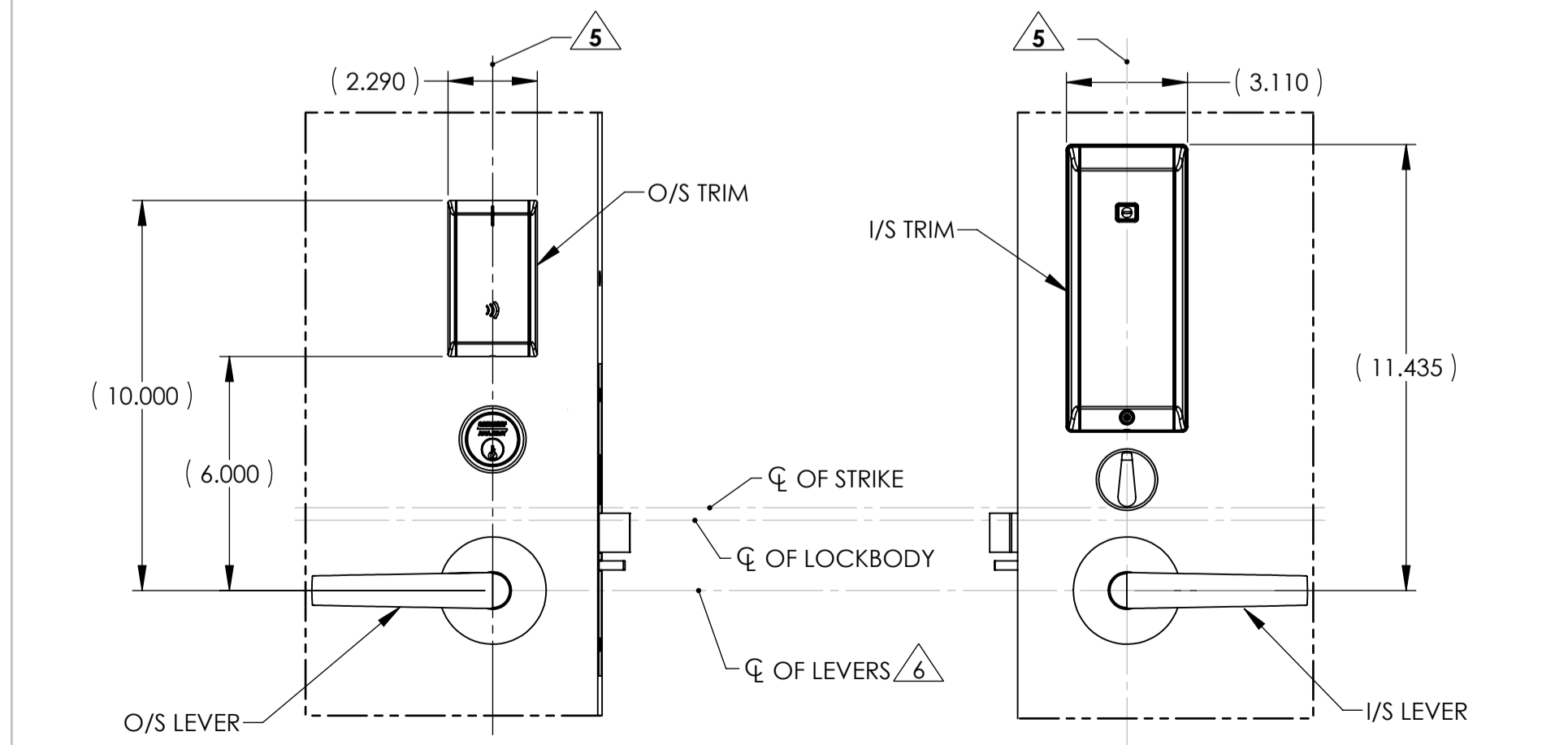
SARGENT ASSA ABLOY Sargent Manufacturing Company
100 Sargent Drive New Haven, CT 06511

DOOR MANUFACTURERS TEMPLATE: RELEASE DATE
IN SERIES TRIM METAL DOOR 16-OCT-15
7900, 8200, OR R8200 MORTISE LOCK TEMPLATE NO.
SHEET 1 OF 2 4713 B

WOOD DOOR



- NOTES:
 1. DRAWING IS NOT TO SCALE.
 2. PREPARATION DETAILS ARE IN SUPPLEMENT TO ANSI/BHMA A156.115 AND/OR A115W.
 3. REFERENCE STRIKE TEMPLATE FOR DETAILS TO PREPARE FRAME.
 4. FOR ELECTROLYNX APPLICATIONS, REFER TO MCKINNEY TRANSFER DEVICE CATALOG.
 5. VERTICAL CENTERLINE IS REFERENCED FROM THE CENTERLINE OF THE BEVEL. (INDUSTRY STANDARD BEVEL IS 1/8 INCH IN 2 INCHES.)
 6. CONSULT THE AUTHORITY HAVING JURISDICTION (AHJ) TO VERIFY THE RECOMMENDED MOUNTING HEIGHT ABOVE THE FINISHED FLOOR (AFF). STANDARD TOLERANCE OF ± .015 APPLIES TO ALL DOOR PREPARATION REQUIREMENTS, UNLESS OTHERWISE SPECIFIED.
 7. DOOR REINFORCEMENT IS RECOMMENDED TO IMPROVE (SURFACE MOUNTED) FASTENER HOLDING POWER AND CRUSH RESISTANCE (WHEN THRU-BOLTING IS EMPLOYED). CONSTRUCTION TECHNIQUES SHOULD REFLECT INDUSTRY BEST PRACTICES (I.E. WDMA, SDI) AND AUTHORIZED METHODS WHERE LABEL SERVICE (I.E. UL, W-H) IS IN EFFECT.
 8. WIRE RACEWAY AREAS SHOULD BE FREE OF OBSTRUCTIONS & SHARP EDGES TO PROTECT WIRES FROM CUTS & ABRASIONS.
 9. CAREFULLY NOTE WHICH FEATURES ARE OPTIONAL, WHETHER THE FEATURE APPLIES TO BOTH SIDES OF THE DOOR AND/OR IF A DEPTH APPLIES.
 10. MAXIMUM PRODUCT DIMENSIONS ARE SHOWN FOR THE PURPOSE OF VERIFYING FITMENT WITH DOOR FRAME STOPS, DOOR STILE SIZE & LIGHT/LOUVER KITS.
 11. IF OPTIONAL LEVERS OR ROSES ARE USED REFERENCE THE RELATED PRODUCT DIMENSIONS TO VERIFY THE FITMENT REQUIREMENTS.



| AUTHORIZED PREFIXES | | IN | | | |
|----------------------|---------------------|-------------------------|-------------------------|-------------------------|-------------------------|
| OPTIONS TABLE | | | | | |
| OPTION | DESCRIPTION | USED FOR FUNCTIONS | | | |
| | | 7976 82276 R82276 | 7977 82277 R82277 | 7978 82278 R82278 | 7979 82279 R82279 |
| A | CYLINDER | X | - | X | - |
| B | THUMB TURN | X | X | - | - |
| USED FOR LOCK SERIES | | | | | |
| C | TRIM POST | 7900 | 8200 | R8200 | |
| D | EXTERNAL DPS | X | X | - | |
| USED FOR PREFIXES | | | | | |
| E | HARD WIRE | 91- | ALL OTHERS | | |
| F | POWER OVER ETHERNET | 220- | ALL OTHERS | | |

| BACKSET DEFINITION | | DOOR HANDING | | | |
|--------------------|--|--------------|---------|----------|--|
| BACKSET | | L.H. | INSIDE | R.H. | |
| | | | OUTSIDE | | |
| | | | INSIDE | | |
| | | L.H.R.B. | OUTSIDE | R.H.R.B. | |

SARGENT ASSA ABLOY
 Sargent Manufacturing Company
 100 Sargent Drive New Haven, CT 06511

DOOR MANUFACTURERS TEMPLATE: IN SERIES TRIM WOOD DOOR 7900, 8200, R8200 MORTISE LOCK
 SHEET 2 OF 2

RELEASE DATE: 16-OCT-15
 TEMPLATE NO.: 4713 B